

Ground Fault Cable Retractor GR1000L Service Manual

AERO-MOTIVE COMPANY



A Woodhead Industries, Inc. Subsidiary

IMPORTANT SAFETY INSTRUCTIONS

Please read this manual carefully and follow its instructions. Improper use or failure to follow these instructions could result in serious injury, death or property damage. Operators should be instructed in the safe and proper use and maintenance of this product. Keep this manual for future reference.

The following safety precautions call attention to potentially dangerous conditions.



DANGER: Immediate hazards which **WILL** result in severe personal injury or death.



WARNING: Hazards or unsafe practices which **COULD** result in severe personal injury or death.



CAUTION: Hazards or unsafe practices which **MAY** result in *minor* personal injury or product or property damage.

NOTE: Instruct operators in the safe, proper use and maintenance. Keep this manual for future reference.

Model GR1000 reel retracts up to 50 feet #4/0, or 60 feet of #2/0 AWG grounding cable used to protect equipment and personnel in the event of a ground fault. The collector ring electrical path through the reel is designed with a current carrying capacity greater than that of the largest cable (#4/0 AWG) to be installed on the reel.



WARNING: Failure to lock spool assembly in position with cable fully extended as instructed will create an explosion hazard. In the event of a fault condition, hazards or unsafe practices **COULD** result in severe personal injury or death.



WARNING: The internal electrical path is not insulated from the reel frame therefore this reel is unsuitable for uses other than retracting ground cables. Use for other applications will create an electric shock hazard. Hazards or unsafe practices **COULD** result in severe personal injury or death.



WARNING: Failure to install, operate, and maintain retractor in accordance instructions may result in electrical shock. Hazards or unsafe practices **COULD** result in severe personal injury or death.



WARNING: If a ground fault has occurred, return reel to Aero-Motive Company for inspection and possible repair before placing back in service. Failure to do so could result in an electric shock hazard. Hazards or unsafe practices **COULD** result in severe personal injury or death.

INSTALLATION

REEL MOUNTING

Reel may be mounted with the base up, base down, or in any position, that maintains the main shaft in a horizontal position. Reel should be mounted with spool assembly in line with the direction of cable travel.



CAUTION: Misalignment of reel and cable travel direction will cause cable to be deflected at a sharp angle around cable guide rollers. This may shorten life of cable and/or slow retraction rate. Hazards or unsafe practices **MAY** result in *minor* personal injury or product or property damage.



CAUTION: Reel should be bolted securely to a flat metal surface of sufficient strength and rigidity to support it under all conditions to which it will be subjected. Mounting holes will accommodate 1/2 inch or 12mm bolts. Hazards or unsafe practices **MAY** result in *minor* personal injury or product or property damage.

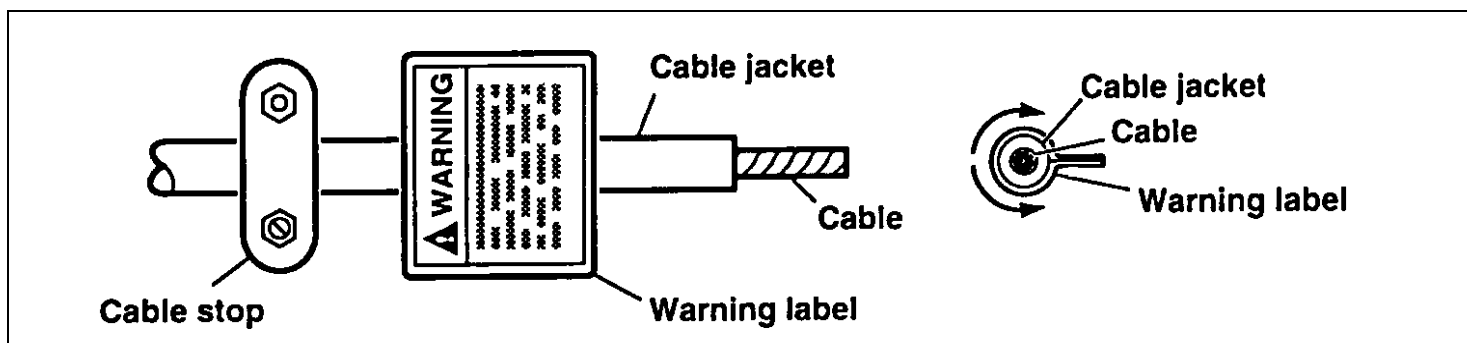
CABLE INSTALLATION

WARNING: All steps related to termination of the cable must be followed carefully. Hazards or unsafe practices COULD result in severe personal injury or death.

Select suitable cable size (#4/0 or #2/0 AWG) to fit application. Cable should have fine stranding for flexibility and a jacket suitable for rough handling. Remove cover and gasket. Loosen nut on cable connector, and pass cable end through the cable connector then through cable clamp. Either strip and tin the cable end or apply a suitable pin connector. Insert cable end or pin connector into the .65 inch diameter hole on the rotating part of the slip ring. Secure cable in place by tightening the set screw and jam nut on the slip ring.

NOTE: Allow some slack in the cable between its termination at the slip ring and its entrance into the spool assembly at the cable connector.

Tighten the nut on cable connector. Hold cable clamp against inside edge of cable connector and tighten screw to secure cable. Replace cover and gasket, securing them with six lock nuts. The cable can now be wound onto the spool assembly. A warning label is provided with retractor and must be attached to free end of cable between adjustable cable stop and the point where the cable jacket is stripped off (see parts drawing). To attach label, remove adhesive cover from back. Place center of label on center of cable. Wrap cable both ways from center so both sides (if any remains) adhere to each other, back to back. (See illustration.)



If cable is replaced at a later date, contact Aero-Motive Co. at 1-800-999-8559 for replacement label.

APPLYING SPRING TENSION

CAUTION: Check to make sure that the cable can still be pulled out without winding the main spring to the end. If cable can not be pulled out completely, too many prime turns have been applied and some will have to be removed. Operating reel with too many prime turns will restrict cable travel and shorten life of the main spring. Hazards or unsafe practices MAY result in *minor* personal injury or product or property damage.


After cable is fully wound on spool assembly, develop one and two prime tension turns by rotating spool assembly one or two times against spring tension. Pass cable through cable guide assembly and install cable stop with desired amount of cable protruding. Apply warning label as discussed in "CABLE INSTALLATION".

GROUND CONNECTION

WARNING: Failure to make a mechanically and electrically sound connection at both ends of this cable will create an electrical shock hazard. Unsafe practices or hazards COULD result in severe personal injury or death.

Ground connection cable should be as large or larger than cable installed on spool assembly. To attach cable to reel, connect 5/8 inch diameter copper rod protruding beyond base. Connection should be made with a commercial fitting specifically intended for attaching this cable to 5/8 inch diameter copper rod.

CABLE GUIDE

 **CAUTION:** Pulling cable at sharp angles to cable guide will shorten cable life and retard retraction speed. Hazards or unsafe practices **MAY** result in *minor* personal injury or product or property damage.


To position guide assembly, remove two screw and washers. Place guide assembly so that cable will wrap directly onto assembly with as little deflection over roller as possible. Cable guide assembly can now be positioned in any one of for locations. Insert and tighten the two screws and washers through base into guide assembly.


OPERATION

RATCHET LOCK


Model GR1000 is equipped with a ratchet, which will hold spool assembly at any of several positions per spool assembly revolution and prevent it from retracting. To release the ratchet, pull the cable out until the ratchet assembly disengages. Reel can then retract cable.

GROUND FAULT CONNECTION

 **WARNING:** Failure to unwind full length of cable and to padlock spool to prevent its inadvertent rewinding, in the event of a ground fault, will create an explosion hazard. Hazards or unsafe practices **COULD** result in severe personal injury or death.


 **WARNING:** Personnel should be kept at a safe distance from Ground Fault reel and cable. In the event of a ground fault, the sudden surge of power will cause cable to move violently. Hazards or unsafe practices **COULD** result in severe personal injury or death.

 **WARNING:** This reel is intended for use in grounding circuit only. The electrical path is not insulated from the reel frame. Hazards or unsafe practices **COULD** result in severe personal injury or death.

 **WARNING:** Check all electrical connections on retractor and ground cable terminations before use. Failure to do so may result in shock hazard. Hazards or unsafe practices **COULD** result in severe personal injury or death.

When cable is pulled out and connected to provide ground fault protection, all cable should be fully extended to provide maximum current capacity. A padlock must be installed on reel trough the hole provided in flange of spool. This padlock prevents spool assembly rotation and assures that the cable remains unwound should a ground fault occur.

MAINTENANCE AND SERVICE


 **WARNING:** If a ground fault condition has occurred, remove reel from service immediately and return it to Aero-Motive Company for inspection and, if necessary, repair. Failure to do so could result in an electric shock hazard. Hazards or unsafe practices **COULD** result in severe personal injury or death.


ELECTRICAL

Inspect all cable connections monthly. Resistance through reel slip ring assembly should never exceed 0.001 ohms. If so, return to Aero-Motive Company for inspection and repair.

NOTE: The slip ring assembly has been designed in such a manner that it cannot be disassembled.

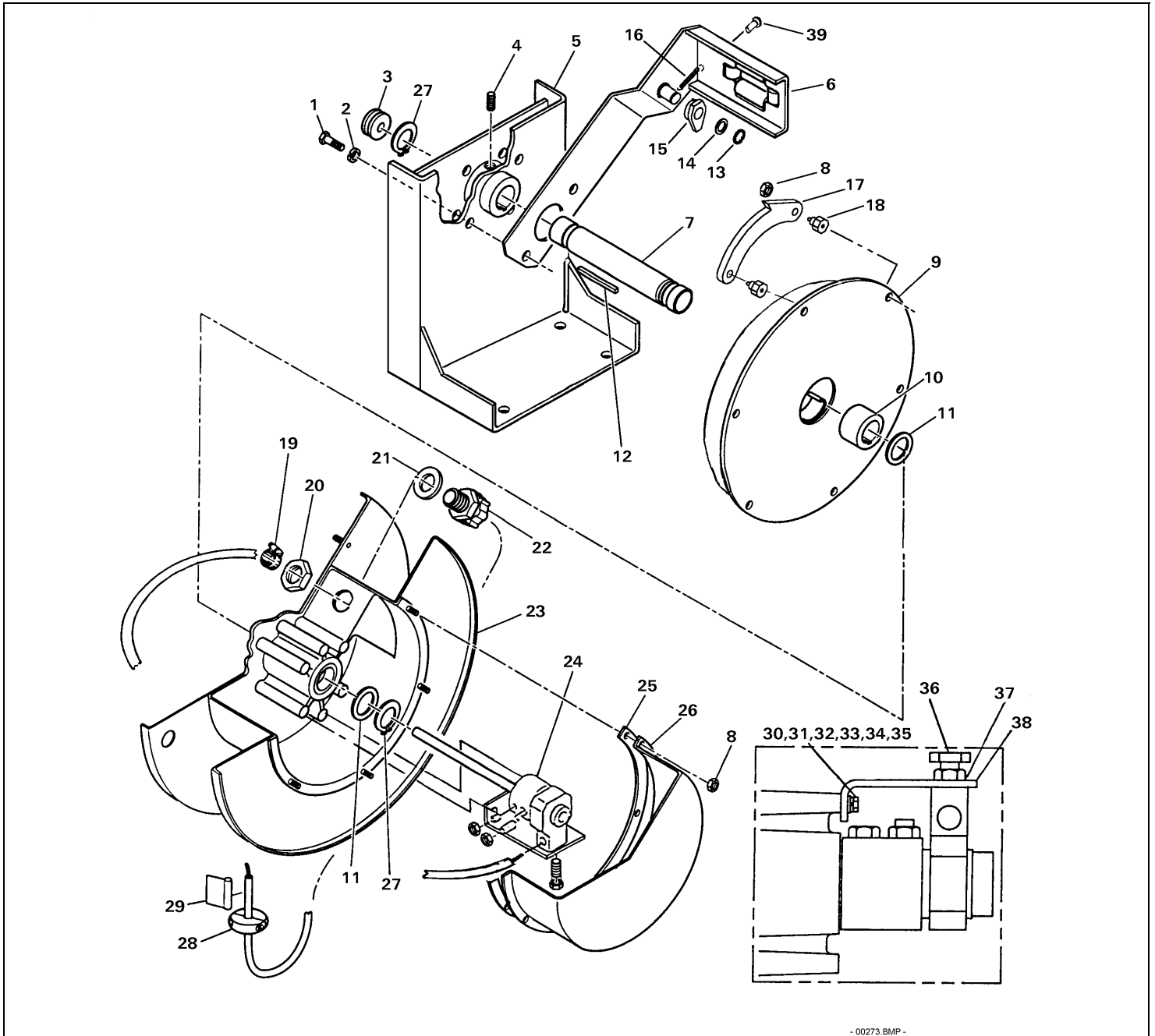
MAIN SPRING REPLACEMENT

 **WARNING:** Spring pocket assemblies are sealed to prevent disassembly. Do not attempt to remove spring from its pocket. Hazards or unsafe practices **COULD** result in severe personal injury or death.

 **WARNING:** Carefully inspect all wire connections after any service work is conducted. Hazards or unsafe practices **COULD** result in severe personal injury or death.

If reel will not develop tension or retract cable, the spring assembly may need to be replaced. To replace mainspring, disconnect the input grounding connection. Remove cover and gasket. Loosen setscrew, and remove retaining ring. Slide complete spool with main shaft out of hub in the base. Remove the six lock nuts that fasten the mainspring housing assembly to spool assembly. Remove mainspring housing assembly, being careful not to misplace the key. Remove hub from mainspring housing assembly. Install hub into new mainspring housing assembly. Insert key into slot in main shaft. Slide hub and new mainspring housing assembly onto main shaft and key. Line up the timing hole near the outer edge of spring housing assembly and timing hole in the spool flange. Secure with six lock nuts. Insert main shaft into hub in the base and reassemble retaining ring to the protruding end of main shaft. Check that there is little axial play and tighten setscrew. Secure cover and gasket to spool assembly using the six lock nuts. Adjust the spring tension. (See **Apply Spring Tension.**)

Replacement Parts



- 00273.BMP -

Item Number	Part Number	Qty.	Description
1		2	Cheese HD screw, M5 x 25 (included with 6)
2		2	Lock washer, M8 (Included with 6)
3	C01590218	1	Grommet
4		1	Set screw, M12 x 25 (included with 5)
5	H92110023	1	Base (includes 4)
6	H22110412	1	Kit, Guide assembly (includes 1, 2)
7	M34060019	1	Main shaft
8	C22490119	12	Hex lock nut, M5 (included with 18, 23)
9 *	H41210021	1	Main spring housing assembly
10	6187000000	1	Main spring hub
11	4011900000	2	Main spring spacer
12	4077300020	1	Key
13		1	Retaining ring (included with 15)
14		1	Ratchet spacer (included with 15)
15	H18110023	1	Kit, Ratchet pawl (includes 13, 14, 16, 39)
16	5385600000	1	Spring (included with 15)
17	M36870011	4	Spacer (included with 18)
18	H18110024	2	Kit, Ratchet (includes 8, 17)
19		1	Clamp (included with 22)
20		1	Conduit nut 1 inch (included with 22)
21		1	Gasket (included with 22)
22	H80130008	1	Kit, Cable connector (includes 19,20,21)
23	H42320037	1	Kit, Spool assembly(includes 8)
24	H96610003	1	Slip ring assembly
25	6187300000	1	Gasket (included with 26)
26	H82630046	1	Slip ring cover
27	00576P0020	2	Retaining ring
28	STM2	1	Kit, Cable stop
29	M13630009	1	Warning label
30		1	Screw, M10x20mm (included with 38)
31		1	Lock washer, M10 (included with 38)
32		1	Washer, M10 (included with 38)
33		1	Screw, M6x20mm (included with 38)
34		1	Lock washer, M6 (included with 38)
35		1	Washer, M6 (included with 38)
36		1	Bolt M12x40 (included with 38)
37		1	Jam nut, M12 (included with 38)
38	H92110026	1	Kit, Slip Ring Bracket (includes 30, 31, 32, 33, 34, 35, 36, 37)
39		1	Clevis pin, 3/16 DIA. x 1/2 (included with 15)

* Recommended Spare Parts

Aero-Motive Company

W A Woodhead Industries Inc. Subsidiary
 PO Box 2678
 Kalamazoo, MI 49003-2678
 (616) 337 7700
 (800) 999 8559
 FAX: (800) 333 6119
 www.aeromotive.com

AKAPP Electro Industrie

W A Woodhead Industries Inc. Subsidiary
 Nijverheidsweg 14 Box 54
 NL-3771 ME Barneveld
 NL-3771 AB Barneveld
 Holland
 (31) 34 241 4022
 FAX: (31) 34 249 2384
 www.akapp.com

Woodhead Connectivity LTD.

W A Woodhead Industries Inc. Subsidiary
 Factory No. 9
 Rassau Industrial Estate
 Ebbw Vale Gwent NP3 5SD
 United Kingdom
 (0495) 35 0436
 FAX: (0495) 35 0877
 sales@wdhd.co.uk

Woodhead Asia PTE LTD.

W A Woodhead Industries Inc. Subsidiary
 401 Commonwealth Drive #04-04
 Haw Par Technocentre
 Singapore 0314
 (65) 261 6533
 FAX: (65) 479 3588
 sales@wasia.com.sg

Woodhead Canada LTD.

W A Woodhead Industries Inc. Subsidiary
 1090 Brevik Place
 Mississauga Ontario
 L4W 3Y5 Canada
 (905) 624-6518
 FAX: (905) 624-9151
 www.woodhead.ca